

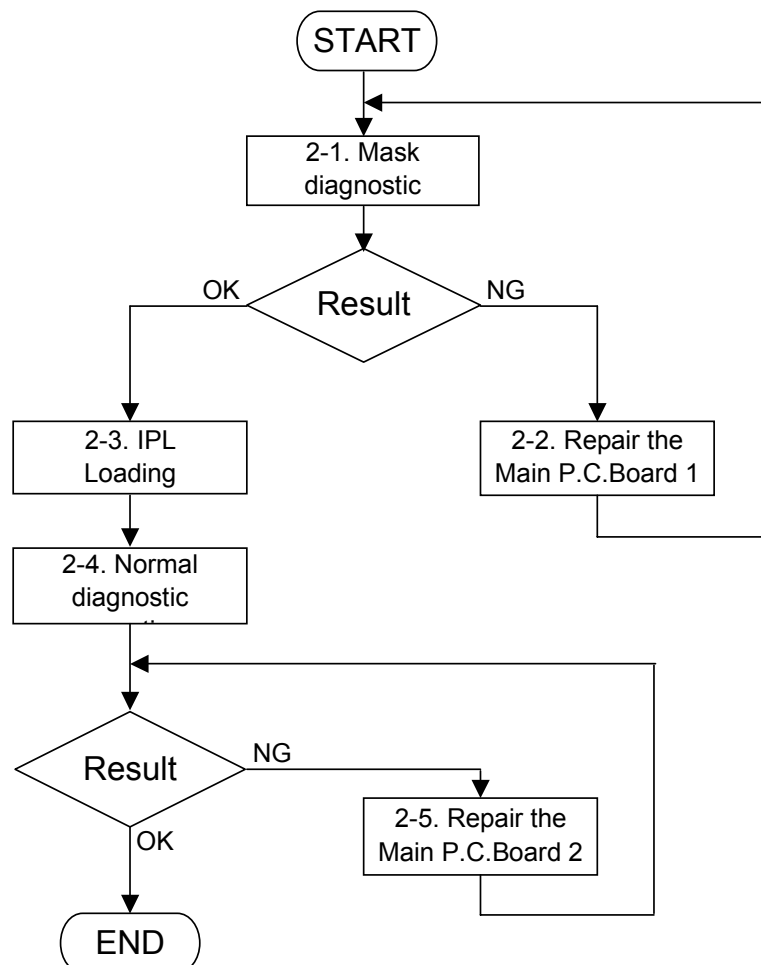
Trouble shooting guide for New ECR model

MODEL: CE-6000, CE-6100, CE-7000, TK-6000, TK-7000, TK-6500, TK-7500

< CONTENTS >

1. Flowchart for trouble shooting procedures
2. Trouble shooting procedures
 - 2-1. Mask diagnostic operation
 - 2-2. Repair the Main P.C.Board 1
 - 2-3. IPL loading
 - 2-4. Normal diagnostic operation
 - 2-5. Repair the Main P.C.Board 2
3. The example of repair
 - 3-1. How to remove the IC
 - 3-2. Preparation for mounting the new IC
 - 3-3. How to fix the IC
 - 3-4. Cleaning after mounting the IC

1. Flowchart for trouble shooting procedures



This is a “Table of Contents preview” for quality assurance

The full manual can be purchased from our store:

<https://the-checkout-tech.com/manuals/casio/TK-6000 TK-6500 TK-7000 TK-7500 TK-T5>

And our free Online Keysheet maker:

<https://the-checkout-tech.com/Cash-Register-Keysheet-Creator/>

[HTTPS://THE-CHECKOUT-TECH.COM](https://THE-CHECKOUT-TECH.COM)